

Product Information

When you want to make a design statement, the Composite Panel is the natural choice, allowing you the flexibility to achieve whatever your mind can conceive.



Exceptionally Flat

The strong, rigid construction of the composite material consists of a compound core between two sheets of aluminium, brushed aluminium, zinc, stainless steel, copper or titanium. This creates a flat surface that virtually eliminates dimpling, buckling and oil canning.



Daringly Formable

It is easily routed, drilled, punched, cut, bent, curved and precisely formed via these and other fabrication techniques to achieve small-radius curves, reverse curves, angles and other shapes, to create dramatic and distinctive designs.



Surprisingly Light

Its light weight allows a wide variety of design options. Installation is quick and easy. For renovation work, cladding can often be installed with little or no alteration to existing structural elements.



Distinctively Colourful

The high-performance coating systems available for it provide outstanding colour and gloss retention in a virtually limitless range of hues. Standard and custom finishes are available, including anodic colours. Continuous coil application ensures consistent, long-lasting colour.



Easily Integrated

It integrates easily with curtain wall or any other façade options provided by most manufacturers. The result is a seamless look for a building's façade – with the added design characteristics that only it can offer.



Beautiful Accents

Its family of Natural Metal products allows every element of the structure to become an element of design – through shaping, colour and more. Its strength, weight and formability allow you to achieve designs that are not feasible with other materials.



Made for Each Other

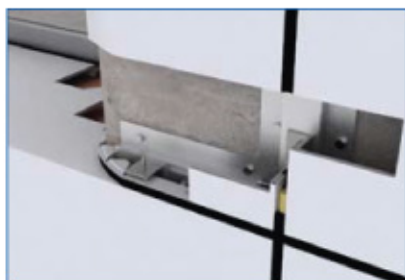
The ability to combine our Composite Panel with other high-quality products in pre-matched or custom colours creates a number of distinct design advantages.



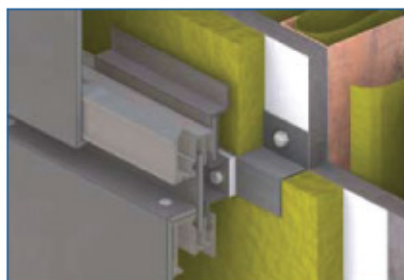
Guaranteed Safe

It is fully tested and environmentally safe, with building code approvals throughout the world. It is available with either a poly-ethylene (PE) core or a fire-resistant (FR) core material. Both products offer the flatness and formability required for demanding applications.





Recessed Windowsill



Rainscreen Installation System



Outside Corner



Parapet Cap



Curved Wall Panel



Dry Seal Installation System